

## 3 bed maisonette to buy in NE16

Anderson Court, Burnopfield, Newcastle upon Tyne, Durham, NE16 6LY

# £130,000

🏠 x3 🛋️ x2 🚿 x1

Tenure

**Leasehold**

Allocated parking

## Property features

- ✓ Three Bedrooms
- ✓ Well Presented
- ✓ Spacious Rooms
- ✓ Close To Amenities
- ✓ EPC Rating C

## Key Information

- ✓ Council Tax: Band B
- ✓ EPC Rating: C
- ✓ Heating supply: Gas

## Description

A well-presented three-bedroom maisonette/flat is now available on the market in the popular residential location of Anderson Court, Burnopfield. Viewings are now available, and early interest is strongly advised — register today to avoid missing out.

Set over two spacious floors, the property offers modern, flexible living ideal for families, first-time buyers, or investors.

The first floor features a bright and spacious open-plan lounge, dining area, and kitchen, creating a welcoming and sociable living space. A lovely entrance hallway leads through to a convenient ground-floor W/C, recently fitted to a modern standard.

Upstairs, the property boasts three well-proportioned bedrooms providing comfortable accommodation throughout, along with a recently modernised family bathroom finished in a contemporary style.

Additional benefits include one allocated parking space, a well-maintained communal setting, and a location close to local amenities, schools, and transport links, offering easy access to surrounding areas and commuter routes.

A fantastic opportunity to secure a stylish, move-in-ready home in a sought-after village location.

Contact us today to arrange your viewing.

Council Tax Band: B

Tenure: Leasehold

Length of Lease: 111

Annual Service Charge Amount: £2,600.00

Price: £130,000

Property Type: Maisonette

Parking: Allocated

Heating: Gas

## Front Entrance



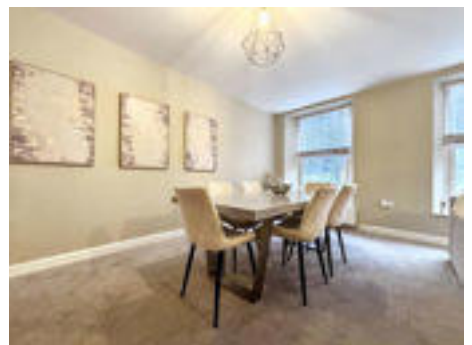
## Lounge / Dining area



## Entrance Hallway



## Dining area



## Kitchen

3.98m x 3.33m (13'0" x 10'11")



## Bedroom One

3.67m x 4.49m (12'0" x 14'8")



## En Suite

2.33m x 1.88m (7'7" x 6'2")



## Bedroom Two

4.24m x 3.85m (13'10" x 12'7")



## Bedroom Three

4.73m x 3.00m (15'6" x 9'10")



## Bathroom



## Entrance to Private Parking



---

## Allocated Parking





Energy Efficiency Rating		
	Current	Potential
<i>Very energy efficient - lower running costs</i>		
(92-100) <b>A</b>		
(81-91) <b>B</b>		
(69-80) <b>C</b>	79	79
(55-68) <b>D</b>		
(39-54) <b>E</b>		
(21-38) <b>F</b>		
(1-20) <b>G</b>		
<i>Not energy efficient - higher running costs</i>		
<b>England, Scotland &amp; Wales</b>	EU Directive 2002/91/EC	

Anderson Court, Burnopfield, Newcastle upon Tyne, Durham, NE16 6LY

Contact your local branch today for more information on this property:

**134 High Street, Peterborough, Cambridgeshire, PE2 8DP, [www.mandairs.co.uk](http://www.mandairs.co.uk)**

These particulars, whilst believed to be accurate are set out as a general outline only for guidance and do not constitute any part of an offer or contract. Intending purchasers should not rely on them as statements of representation of fact, but must satisfy themselves by inspection or otherwise as to their accuracy. No person in this firm's employment has the authority to make or give any representation or warranty in respect of the property.

