



## 2 bed semi-detached house to buy in NE20

Jackson Avenue, Ponteland, Newcastle upon Tyne, Northumberland, NE20 9UY

# £245,000

 x2
  x1
  x1

Tenure

**Freehold**

## Property features

- ✓ Two bedroom
- ✓ Semi detached house
- ✓ Situated in the popular village of Ponteland
- ✓ Excellent transport links
- ✓ EPC Rating D

Driveway parking

## Key Information

- ✓ Council Tax: Band B
- ✓ EPC Rating: D
- ✓ Heating supply: Gas

## Description

I am excited to present this charming two-bedroom semi-detached house nestled in the highly desirable area of Ponteland, renowned for its proximity to local amenities and excellent transport links. The accommodation welcomes you with an inviting entrance porch that opens into a warm and cosy lounge, perfect for relaxing after a long day.

The well-appointed kitchen diner is a delightful space for culinary adventures and family gatherings, while a small utility room adds convenience to daily life. Ascend the staircase to the first-floor landing, where you'll find the spacious master bedroom, a private WC, and a family bathroom designed for comfort and functionality.

The second bedroom offers a peaceful retreat for guests or family members. Outside, you are greeted by a lovely front garden and a driveway that leads to a generous, sunny, and vibrant rear garden—a perfect oasis for outdoor entertaining or simply enjoying the sunshine. This home truly blends comfort, style, and convenience in one fantastic package.

Council Tax Band: B

Tenure: Freehold

Price: £245,000

Property Type: Semi-detached house

Parking: Driveway

Heating: Gas

## Porch

---

## Hall

---

## Lounge

4.46m x 3.99m (14'7" x 13'1")



## Kitchen/ Diner

5.53m x 2.82m (18'1" x 9'3")



## Utility room

1.80m x 1.53m (5'10" x 5'0")



## Landing



## Master bedroom

4.64m x 2.96m (15'2" x 9'8")



## Bedroom two

3.05m x 3.15m (10'0" x 10'4")



## W/C



## Bathroom

2.42m x 1.82m (7'11" x 5'11")



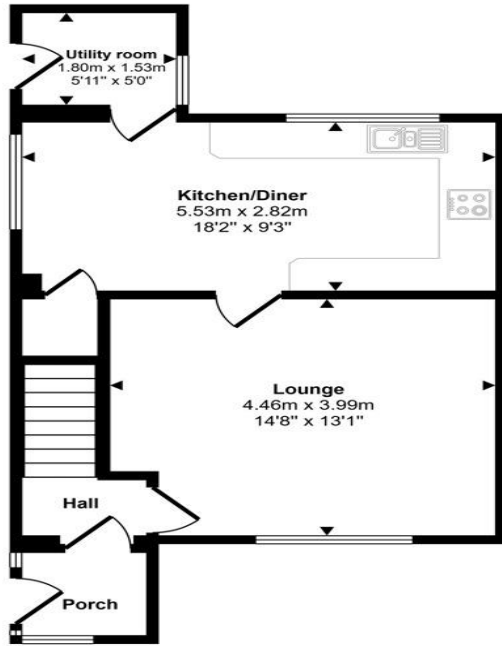
## Rear garden



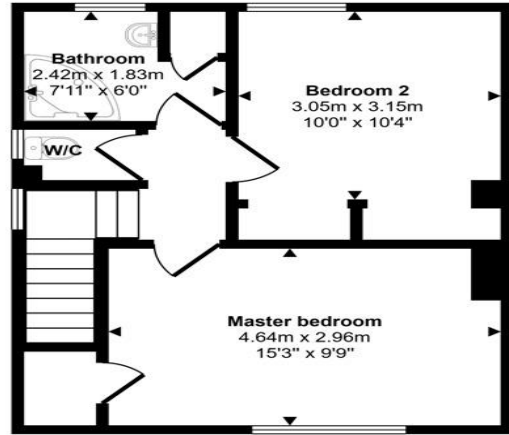
## Front garden and driveway



Approx Gross Internal Area  
83 sq m / 890 sq ft



Ground Floor  
Approx 44 sq m / 473 sq ft



First Floor  
Approx 39 sq m / 417 sq ft

This floorplan is only for illustrative purposes and is not to scale. Measurements of rooms, doors, windows, and any items are approximate and no responsibility is taken for any error, omission or mis-statement. Icons of items such as bathroom suites are representations only and may not look like the real items. Made with Made Snappy 360.

Energy Efficiency Rating		
	Current	Potential
<i>Very energy efficient - lower running costs</i>		
(92-100) <b>A</b>		
(81-91) <b>B</b>		
(69-80) <b>C</b>		78
(55-68) <b>D</b>	67	
(39-54) <b>E</b>		
(21-38) <b>F</b>		
(1-20) <b>G</b>		
<i>Not energy efficient - higher running costs</i>		
<b>England, Scotland &amp; Wales</b>		EU Directive 2002/91/EC

Jackson Avenue, Ponteland, Newcastle upon Tyne, Northumberland, NE20 9UY

Contact your local branch today for more information on this property:

**134 High Street, Peterborough, Cambridgeshire, PE2 8DP, [www.mandairs.co.uk](http://www.mandairs.co.uk)**

These particulars, whilst believed to be accurate are set out as a general outline only for guidance and do not constitute any part of an offer or contract. Intending purchasers should not rely on them as statements of representation of fact, but must satisfy themselves by inspection or otherwise as to their accuracy. No person in this firm's employment has the authority to make or give any representation or warranty in respect of the property.

