



## 2 bed end of terrace house to buy in NE29

Langley Road, North Shields, Tyne and  
Wear, NE29 7LZ

**£120,000** Starting Bid

🏠 x2 🚗 x1 🚰 x1

Tenure

**Freehold**

## Property features

✓ EPC Rating D

On Street parking

Garden

## Key Information

- ✓ Council Tax: Band A
- ✓ EPC Rating: D
- ✓ Heating supply: Gas

## Description

TO BE SOLD via ONLINE AUCTION. Fees apply.

This well presented two bedroom end of terrace home is ideally located in a popular and well-established area. Offering well-proportioned living accommodation, the property benefits from a generous private garden, perfect for outdoor entertaining, gardening, or family use.

The home provides comfortable and practical living space, with two good-sized bedrooms and a layout that suits first-time buyers, downsizers, or investors alike. As an end-terrace,

Offered to the market chain free, this is an excellent opportunity for a smooth and straightforward purchase in a sought-after location.

Council Tax Band: A

Tenure: Freehold

Price: Starting Bid £120,000

Property Type: End of terrace house

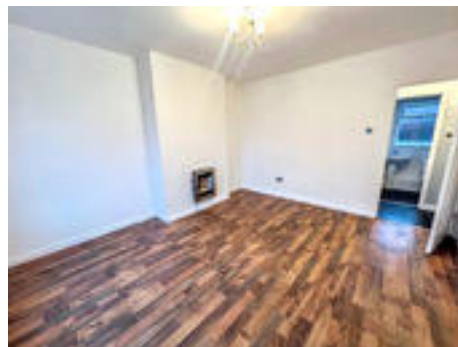
USPs: Garden

Parking: On Street

Heating: Gas

## Lounge

4.20m x 3.70m (13'9" x 12'1")



## Kitchen

2.40m x 2.70m (7'10" x 8'10")

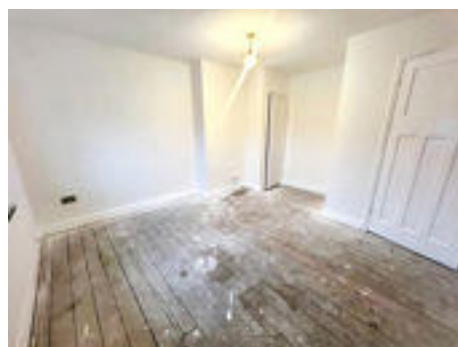


## Bathroom



## Main bedroom

3.80m x 3.30m (12'5" x 10'9")



## Bedroom Two

2.30m x 2.50m (7'6" x 8'2")



## Garden





Energy Efficiency Rating		Current	Potential
<i>Very energy efficient - lower running costs</i>			
(92-100) <b>A</b>			
(81-91) <b>B</b>			
(69-80) <b>C</b>			71
(55-68) <b>D</b>		63	
(39-54) <b>E</b>			
(21-38) <b>F</b>			
(1-20) <b>G</b>			
<i>Not energy efficient - higher running costs</i>			
<b>England, Scotland &amp; Wales</b>		EU Directive 2002/91/EC	

Langley Road, North Shields, Tyne and Wear, NE29 7LZ

Contact your local branch today for more information on this property:

**134 High Street, Peterborough, Cambridgeshire, PE2 8DP, [www.mandairs.co.uk](http://www.mandairs.co.uk)**

These particulars, whilst believed to be accurate are set out as a general outline only for guidance and do not constitute any part of an offer or contract. Intending purchasers should not rely on them as statements of representation of fact, but must satisfy themselves by inspection or otherwise as to their accuracy. No person in this firm's employment has the authority to make or give any representation or warranty in respect of the property.

