



4 bed semi-detached house to buy in NE23

Greenlaw Road, Cramlington, Northumberland, NE23 6NW





£239,950 Offers over

 x4  x1  x2

Tenure

Freehold

Property features

-  Generous family home
-  Sought after location
-  No onward purchase
-  Two reception rooms
-  EPC Rating C

Driveway & Garage parking

Key Information

- ✓ Council Tax: Band C
- ✓ EPC Rating: C
- ✓ Heating supply: Gas

Description

Well located in the highly sought-after Southfield Green, this well cared for, original-built four bedroom semi-detached home offers an exceptional opportunity for families seeking comfort, convenience, and future potential. Generous living accommodation flows throughout, making it an ideal setting for family life and entertaining alike.

The heart of the property features a spacious reception room with windows and glazed doors opening to the garden. Four well-proportioned bedrooms provide plenty of space for growing families, guests, or home working. The kitchen and bathrooms have been maintained with care but also offer scope for updating to suit your personal style.

Another feature is the extended garage, providing valuable storage, workshop space, or even the possibility of conversion, subject to planning. The property is offered freehold and with no onward purchase, presenting a smooth buying experience and allowing you to make this wonderful residence your new home straight away.

Situated just steps away from Alexandra Park, outdoor leisure and relaxing walks are on your doorstep. Highly regarded schools and excellent local amenities are all within easy reach, making day-to-day living convenient.

This property is brimming with potential in a superb location—don't miss the chance to explore all it has to offer. Arrange your viewing today to fully appreciate the charm and possibilities of this inviting family home.

Council Tax Band: C

Tenure: Freehold

Price: Offers over £239,950

Property Type: Semi-detached house

Parking: Driveway & Garage

Heating: Gas

Entrance hallway



Living Room



Kitchen



Dining Room



Cloaks W/C



Landing



Bedroom 1



Bedroom 2



Bedroom 3



Bedroom 4



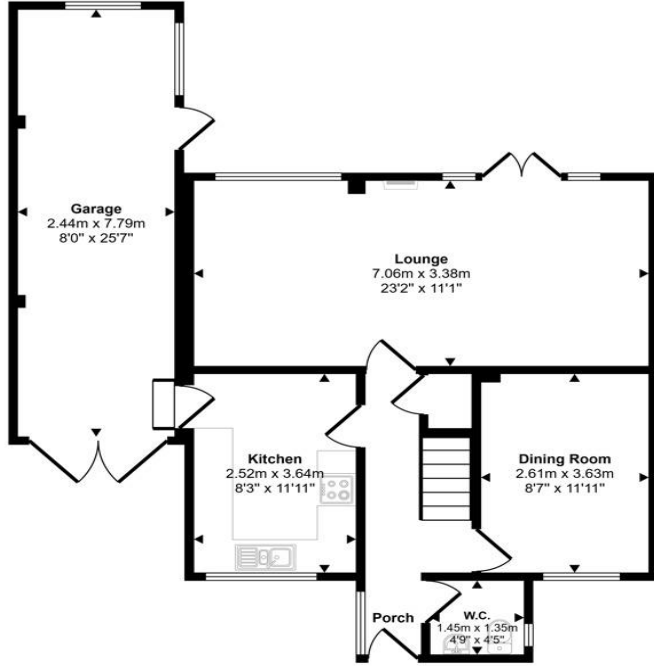
Bathroom



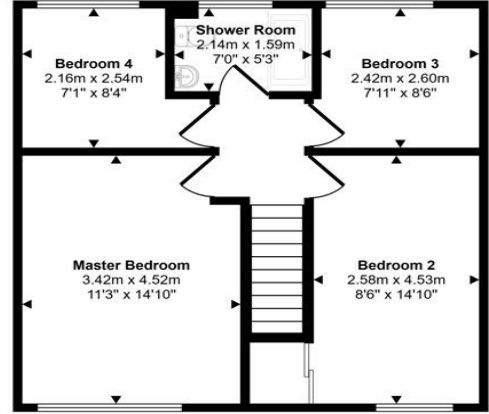
Garden



Approx Gross Internal Area
126 sq m / 1357 sq ft



Ground Floor
Approx 75 sq m / 805 sq ft



First Floor
Approx 51 sq m / 552 sq ft

This floorplan is only for illustrative purposes and is not to scale. Measurements of rooms, doors, windows, and any items are approximate and no responsibility is taken for any error, omission or mis-statement. Icons of items such as bathroom suites are representations only and may not look like the real items. Made with Made Snappy 360.

Energy Efficiency Rating		
	Current	Potential
<i>Very energy efficient - lower running costs</i>		
(92-100) A		
(81-91) B		85
(69-80) C	74	
(55-68) D		
(39-54) E		
(21-38) F		
(1-20) G		
<i>Not energy efficient - higher running costs</i>		
England, Scotland & Wales	EU Directive 2002/91/EC	

Greenlaw Road, Cramlington, Northumberland, NE23 6NW

Contact your local branch today for more information on this property:

134 High Street, Peterborough, Cambridgeshire, PE2 8DP, www.mandairs.co.uk

These particulars, whilst believed to be accurate are set out as a general outline only for guidance and do not constitute any part of an offer or contract. Intending purchasers should not rely on them as statements of representation of fact, but must satisfy themselves by inspection or otherwise as to their accuracy. No person in this firm's employment has the authority to make or give any representation or warranty in respect of the property.

