



## 3 bed maisonette to buy in NW2

Melrose Avenue, London, NW2 4JY

**£450,000** Starting Bid

 x3
  x1
  x1

Tenure

**Leasehold**

## Property features

 EPC Rating D

daniels  
danielsestateagents.co.uk

## Key Information

- ✓ Council Tax: Band D
- ✓ EPC Rating: D
- ✓ Heating supply: Gas
- ✓ Electric supply: National Grid
- ✓ Water supply: Direct mains water
- ✓ Broadband: ADSL copper wire
- ✓ Mobile signal: Good

## Description

Being sold via Secure Sale online bidding. Terms & Conditions apply. Starting Bid £450,000.

A well presented duplex maisonette with private entrance located in Willesden Green. The property comprises three bedrooms, living room, kitchen, two bathrooms, separate w/c, balcony and use of a shared garden. Willesden Green Underground Station is situated 0.4 miles away and is served by the Jubilee Line (Zone 2).

### Auctioneers Additional Comments

Pattinson Auction are working in Partnership with the marketing agent on this online auction sale and are referred to below as 'The Auctioneer'.

This auction lot is being sold either under conditional (Modern) or unconditional (Traditional) auction terms and overseen by the auctioneer in partnership with the marketing agent.

The property is available to be viewed strictly by appointment only via the Marketing Agent or The Auctioneer. Bids can be made via the Marketing Agents or via The Auctioneers website.

Please be aware that any enquiry, bid or viewing of the subject property will require your details being shared between both any marketing agent and The Auctioneer in order that all matters can be dealt with effectively.

The property is being sold via a transparent online auction.

In order to submit a bid upon any property being marketed by The Auctioneer, all bidders/buyers will be required to adhere to a verification of identity process in accordance with Anti Money Laundering procedures. Bids can be submitted at any time and from anywhere.

Our verification process is in place to ensure that AML procedure are carried out in accordance with the law.

The advertised price is commonly referred to as a 'Starting Bid' or 'Guide Price', and is accompanied by a 'Reserve Price'. The 'Reserve Price' is confidential to the seller and the auctioneer and will typically be within a range above or below 10% of the 'Guide Price' / 'Starting Bid'.

Council Tax Band: D

Tenure: Leasehold

Length of Lease: 96

Annual Service Charge Amount: £300.00

Price: Starting Bid £450,000

Property Type: Maisonette

Year built: 1930

Construction materials: Brick and block

Roofing type: Slate tiles

Risk of floods and or erosion: No

Flooded in last 5 years: No

Flood defences: No

Planning permissions or proposals for development: No

Coalfield or mining area: No

Listed property: No

Conservation area: No

Public rights of way: No

Adaptions for accessibility: No

Restrictions: No

Required access: No

Heating: Gas

Electric: National Grid

Water: Direct mains water

Water meter: No

Sewerage: Standard UK domestic

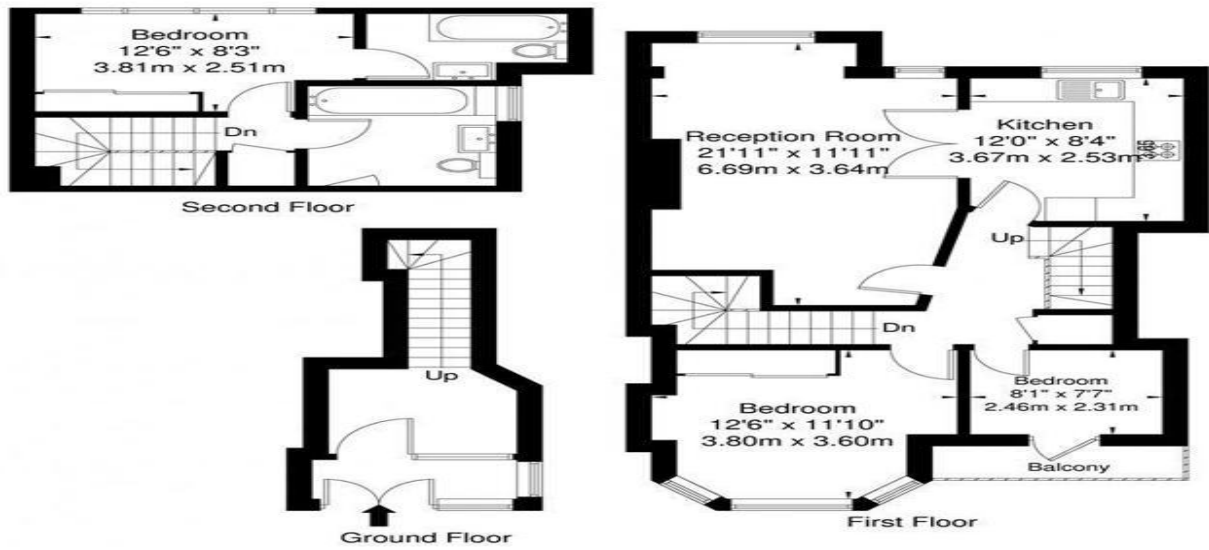
Air conditioning: No

Broadband: ADSL copper wire

Mobile signal coverage: Good

# Melrose Avenue, NW2 4JY

Approx. Gross Internal Area = 83.9 sq m / 903 sq ft



Ref:   
 Disclaimer : Floor plan measurements are approximate and are for illustrative purposes only. While we do not doubt the floor plan accuracy and completeness, you or your advisors should conduct a careful, independent investigation of the property in respect of monetary valuation.

Copyright THE BLEU PLAN



Energy Efficiency Rating		
	Current	Potential
Very energy efficient - lower running costs		
(92-100) <b>A</b>		
(81-91) <b>B</b>		
(69-80) <b>C</b>		77
(55-68) <b>D</b>	60	
(39-54) <b>E</b>		
(21-38) <b>F</b>		
(1-20) <b>G</b>		
Not energy efficient - higher running costs		
<b>England, Scotland &amp; Wales</b>	EU Directive 2002/91/EC	

Melrose Avenue, London, NW2 4JY

Contact your local branch today for more information on this property:

**134 High Street, Peterborough, Cambridgeshire, PE2 8DP, [www.mandairs.co.uk](http://www.mandairs.co.uk)**

These particulars, whilst believed to be accurate are set out as a general outline only for guidance and do not constitute any part of an offer or contract. Intending purchasers should not rely on them as statements of representation of fact, but must satisfy themselves by inspection or otherwise as to their accuracy. No person in this firm's employment has the authority to make or give any representation or warranty in respect of the property.

