



3 bed semi-detached house to buy in DH4

Chigwell Close, Penshaw, Houghton Le Spring, Tyne and Wear, DH4 7EB

£209,950

 x3
  x2
  x1

Tenure

Freehold

Property features

- ✓ Semi-Detached Family Home
- ✓ Three Double Bedrooms
- ✓ Principal Bedroom With En-suite
- ✓ Garage & Driveway
- ✓ EPC Rating C

Driveway & Garage parking

Garden

Key Information

- ✓ Council Tax: Band C
- ✓ EPC Rating: C
- ✓ Heating supply: Gas
- ✓ Electric supply: National Grid

Description

****SEMI-DETACHED FAMILY HOME**THREE DOUBLE BEDROOMS**PRINCIPAL BEDROOM WITH EN-SUITE**GARAGE AND DRIVEWAY**OWNED SOLAR PANELS*****PRIVATE REAR GARDEN****

Pattinson Estate Agents are excited to welcome to the market this well presented semi-detached family home, which boasts three double bedrooms and is nestled away in a quiet cut-de-sac on the highly desirable Chigwell Close, Penshaw. Perfectly positioned within close proximity to local shops and amenities, good public transport and major road links via the A19. Situated within walking distance to the popular Barnwell Academy and Herrington Country Park, as well as being a short drive to Sunderland & Newcastle City Centre's.

This impressive family residence is spacious throughout and briefly consists:- Entrance/porch, open plan lounge/dining room, modern kitchen and a sun room. To the first floor lies the principal bedroom with an en-suite, a further two double bedrooms and three piece family bathroom. Externally to the front there is an open garden with a driveway and garage, to the rear there is a fully enclosed, private garden.

This property also benefits from gas central heating, double glazing throughout and owned solar panels.

Early viewings are recommended to appreciate the location, standard and size of this property. Please call our Houghton branch to arrange a viewing.

Council Tax Band: C

Tenure: Freehold

Price: Offers In Excess Of £209,950

Property Type: Semi-detached house

USPs: Garden

Parking: Driveway & Garage

Heating: Gas

Electric: National Grid, Solar PV (Photovoltaic) panels

Entrance/Porch

1.55m x 0.92m (5'1" x 3'0")

Property entrance leading to the porch, which has quality laminate flooring and a radiator.

Lounge/Dining Room

7.41m x 3.21m (24'3" x 10'6")

Open plan lounge/diner benefiting from quality laminate flooring, two radiators, a double glazed front aspect bow window and Bi-fold doors leading to the sun room.



Kitchen

3.29m x 3.71m (10'9" x 12'2")

Stylish kitchen benefiting from a range of upper and lower units with contrasting square edge worksurfaces and matching up-stands. There is the additional bonus of integrated appliances such as:- a composite sink unit, dishwasher, washing machine, fridge/freezer, dual ovens and an induction hob. Tile flooring, a vertical radiator, double glazed rear aspect window and an external door leading to the rear garden.



Sun Room

3.61m x 2.38m (11'10" x 7'9")

The sun room has an insulated roof, tiled flooring, double glazed windows, a Velux window and French doors leading to the rear garden.



Principal Bedroom

4.07m x 2.79m (13'4" x 9'1")

Double bedroom with an en-suite, carpet flooring, fitted wardrobes, a radiator and a double glazed rear aspect window.



En-suite

1.60m x 1.61m (5'2" x 5'3")

Convenient en-suite benefiting from a walk-in shower, W. and a hand wash basin with a vanity cupboard. Tiled walls, tiled splash back, a heated towel rail and a double glazed rear aspect window.



Bedroom Two

3.46m x 2.78m (11'4" x 9'1")

Double bedroom with carpet flooring, a radiator and a double glazed front aspect window.



Bedroom Three

2.54m x 3.02m (8'4" x 9'10")

Double bedroom with carpet flooring, a radiator and a double glazed front aspect window.



Bathroom

2.46m x 2.26m (8'0" x 7'4")

Three piece bathroom benefiting from a paneled bath, hand wash basin and W.C. Tile flooring, partly tiled walls, a radiator and a double glazed rear aspect window.

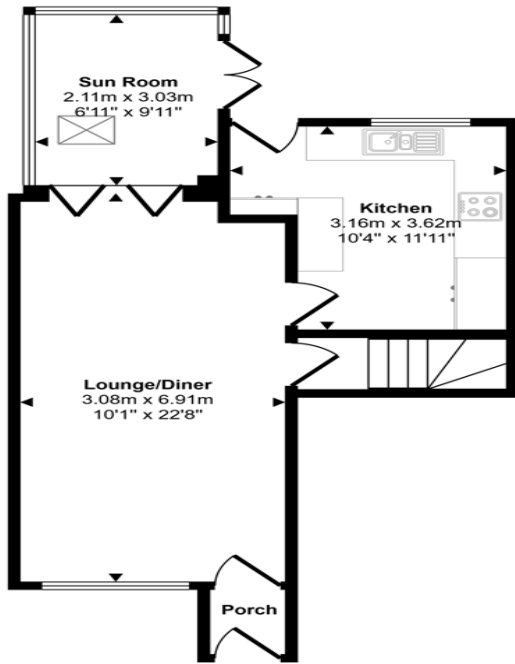


Exrernal

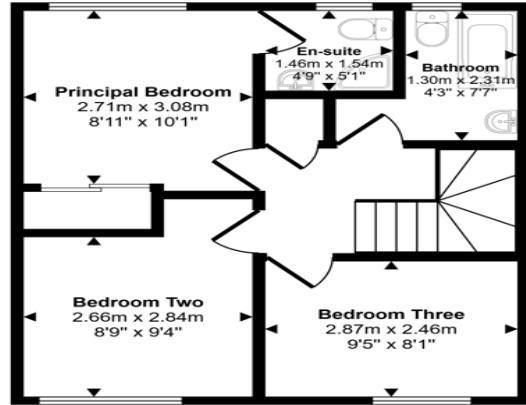
Externally to the front there is an open lawn laid to artificial turf with mature shrubs, a driveway and garage. To the rear there is a fully enclosed garden with artificial grass, planters to the boards and a patio area adjacent to the property. The rear garden also has the additional bonus of not being overlooked.



Approx Gross Internal Area
81 sq m / 877 sq ft



Ground Floor
Approx 42 sq m / 451 sq ft



First Floor
Approx 39 sq m / 425 sq ft

This floorplan is only for illustrative purposes and is not to scale. Measurements of rooms, doors, windows, and any items are approximate and no responsibility is taken for any error, omission or mis-statement. Icons of items such as bathroom suites are representations only and may not look like the real items. Made with Made Snappy 360.

| Energy Efficiency Rating | | |
|----------------------------------------------------|----------------------------|-----------|
| | Current | Potential |
| <i>Very energy efficient - lower running costs</i> | | |
| (92-100) A | | |
| (81-91) B | | |
| (69-80) C | 77 | 79 |
| (55-68) D | | |
| (39-54) E | | |
| (21-38) F | | |
| (1-20) G | | |
| <i>Not energy efficient - higher running costs</i> | | |
| England, Scotland & Wales | EU Directive 2002/91/EC | |

Chigwell Close, Penshaw, Houghton Le Spring, Tyne and Wear, DH4 7EB

Contact your local branch today for more information on this property:

134 High Street, Peterborough, Cambridgeshire, PE2 8DP, www.mandairs.co.uk

These particulars, whilst believed to be accurate are set out as a general outline only for guidance and do not constitute any part of an offer or contract. Intending purchasers should not rely on them as statements of representation of fact, but must satisfy themselves by inspection or otherwise as to their accuracy. No person in this firm's employment has the authority to make or give any representation or warranty in respect of the property.

